

S.E. 1/4 OF N.E. 1/4
SECTION 20, T.6N., R.1W., S.L.B. & M.

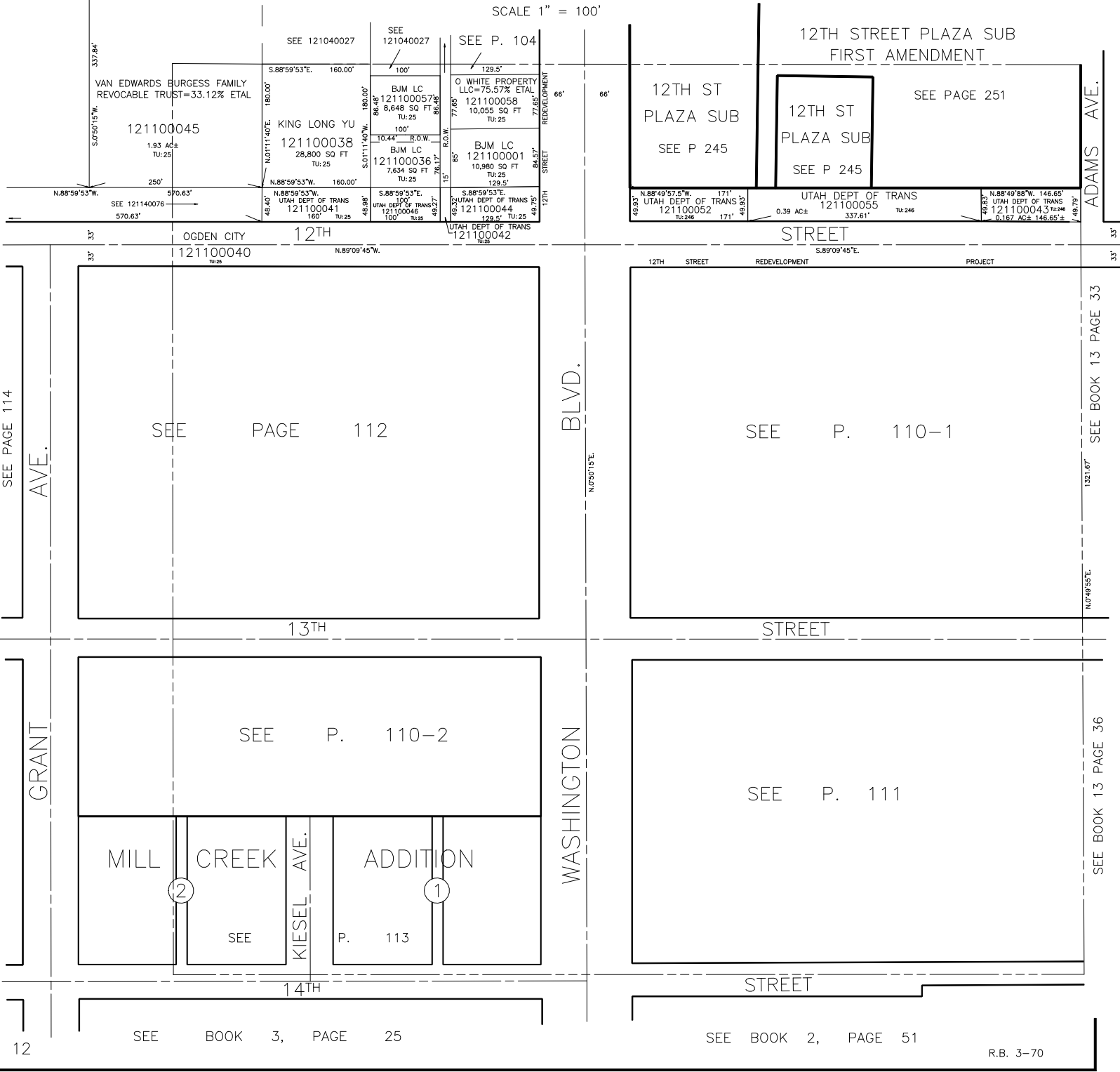
110

ALSO SEE P. 110-1, & P. 110-2

TAXING UNIT: 25, 246

IN OGDEN CITY

SCALE 1" = 100'



SEE PAGE 114

GRANT AVE.

GRANT AVE.

WASHINGTON BLVD.

WASHINGTON BLVD.

ADAMS AVE.

12

SEE BOOK 3, PAGE 25

SEE BOOK 2, PAGE 51

R.B. 3-70

SEE BOOK 13 PAGE 33

SEE BOOK 13 PAGE 36